

A black metal window mount bracket with a grid of circular holes and a central mounting arm, set against a dark background with a geometric pattern of overlapping planes.

# Installation Instructions

ACMGWM10-10 Window Mount Bracket



# The following instructions should be used to install the Concierge Displays ACMGWM10 window mount bracket.

## Preparation and Notes

Ensure that there is sufficient access to the top part of the window frame where the bracket is to be mounted.

There will be the need to feed down DC power cable and or UTP cable.

## Tools required

- Isopropyl wipe
- Fine tip permanent marker
- Utility knife
- Battery powered drill/driver
- 8mm drill bit
- Philips drive bit
- 3mm Hex drive
- 10mm nut drive
- No. 2 handheld phillips screw driver

## Step 1

Determine the height that the bracket is to be mounted. Place the bracket in the desired location and with a marker, mark the window sealant where the bracket comes in contact. Using a utility knife cut out all of the silicone that you have marked to allow the bracket to sit flush into the corner of the window frame.



## Step 2

Remove the VESA side of the panel adaptor bracket by removing the 2 x M5 phillips screws from the bottom and sliding it up. Remove the bracket side of the panel adaptor bracket by removing the 2 x M6 Nyloc nuts using a 10mm nut driver. This is to allow access for drilling and fastening of the bracket to the window frame.



### Step 3

Place the bracket back in the desired location. With a marker, mark the desired location that is to be drilled to for the data or DC power cable to pass through to the display. There is a cut out on the bracket in the middle of the 4 mounting holes. This is where the window frame is to be drilled.

**CAUTION! If the drill bit comes in contact with the window when drilling there is a chance the window may be damaged.**



---

### Step 4

Using a Isopropyl wipe, clean the window where the bracket is to be mounted.

Peel off the adhesive tapes protective film and carefully place the window mount in the desired location ensuring the already drilled 8m hole lines up with cut out in the bracket.

The adhesive film should now be holding up the bracket itself.



## Step 5

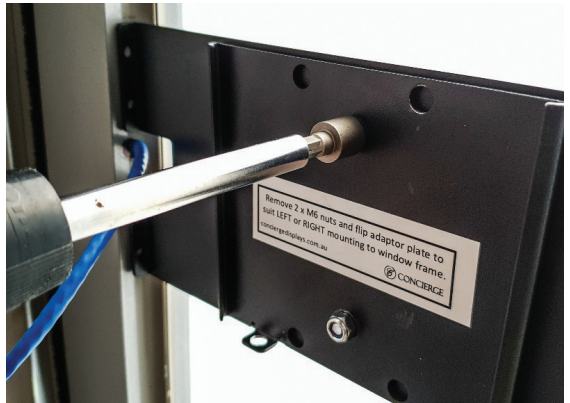
Using a battery screwdriver use a minimum of 2 self drilling screws provided screwing through 2 of the 4 x 4mm holes in the bracket.



## Step 6

Re-attach the adapter plate to the window bracket using the previously removed M10 Nyloc nuts.

Attached the other half of the adapter plate to the display using the 4 x M4 socket head screws and M4 washers provided.



## Step 7

The window mount is now ready for the Concierge Room Booking Display to be mounted. Slide on the display, connect the required cables and screw on the 2 x M5 screws provided with a hand held screw driver. The screw points are located at the base of the bracket.

**\*\* To switch between mounting to the LEFT or RIGHT of a window frame. Remove the VESA mount, then remove the 2 x M6 nuts and flip adaptor plate to suit.**